



top  
adventure  
park

[WWW.TOPADVENTUREPARK.COM](http://WWW.TOPADVENTUREPARK.COM)  
[info@topadventurepark.com](mailto:info@topadventurepark.com)

**ARTIFICIAL ADVENTURE PARKS BUILDER  
EASY WAY TO MAKE BUSINESS!  
BUY ONE OF OUR SELF SUPPORTING ADVENTURE PARK!**

**HERE OUR STRENGTHS**

- **We are Leader in Europe to project, build and start up new adventure parks on trees or Artificial;**
- **Smart safety System with maximum customer's care and no Risks;**
- **We provide all the training and marketing support, to start up quickly and with a low breackeven;**
- **Creation of High Emotional trails for a grat catchment area;**
- **Possibility to buy mobile structures and change location frequently to improve gains;**

Let you drive in a new business experience, with our artificials adventure park in few weeks you can begin your activity and make profit quickly.

No permissions required, a tennis field area is enough to start with your Top adventure park!

You may choose in our catalogue or we may develop a special project for you, tailored on your needs!

We provide also:

- DPI (Personal Safety Equipment);
- Rescue device;
- Staff Training;
- Marketing Training;
- Gestional Software;

Any Artificial Adventure Park is a modular structure, you may expand it year by year and let your business emprove.

**ARTIFICIAL ADVENTURE PARKS  
A SMART WAY TO MAKE MONEY  
AND RE-EVALUATE AREAS!**

Our Artificial Adventure Parks includes many games and spectacular passages that stimulate coordination, focus, fitness and also courage. The activity is very fun and exciting also and suitable for a great catchment area: Kids, Adults, birthday parties, bachelor/ette parties, Team building, summer schools, events and sportives.



**top  
adventure  
park**

[WWW.TOPADVENTUREPARK.COM](http://WWW.TOPADVENTUREPARK.COM)

[info@topadventurepark.com](mailto:info@topadventurepark.com)

And more their versatility allows our customer to use them in many situations.

- **Trade Fairs, Malls, Events;**
- **Outdoor Training, Team Building;**
- **Itinerant Shows;**
- **Hotel and Resort new Attraction;**

Buy a great Artificial Adventure Park All inclusive and start now with your business!

**CHECK OUR CATALOGUE READY FOR DELIVERY  
AND START NOW WITH YOUR BUSINESS!!!**

- **You may Brand it with artificial Trees and lives, or with a special Adventure Theme!**
- **We provide all the equipment, you've just to find the Area!!**



**MODEL "THE ROCK "**  
**Technical info**  
**High 9mt**  
**Hourly Flow 33 persons**  
**Number of passages 51**  
**Kind of Structure, Mobile**



**top  
adventure  
park**

[WWW.TOPADVENTUREPARK.COM](http://WWW.TOPADVENTUREPARK.COM)

[info@topadventurepark.com](mailto:info@topadventurepark.com)

**No foundations required**

**Cost all inclusive \* Euro89.000,00**

**BRANDING IN STYLE JUNGLE/PALMS /ROCKY MOUNTAIN**



**MODELLO "HIMALAYA"**

**Technical info**

**High 13mt**

**Hourly Flow 72 persons**

**Number of passages 54**

**Kind of Structure, not Mobile**

**foundations required**

**Cost all inclusive \* Euro 129.000,00**

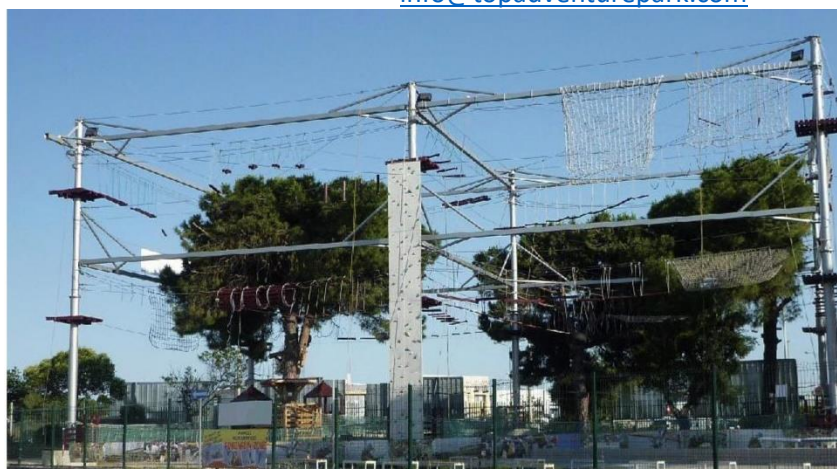
**BRANDING IN STYLE JUNGLE/PALMS /ROCKY MOUNTAIN**



**top  
adventure  
park**

[WWW.TOPADVENTUREPARK.COM](http://WWW.TOPADVENTUREPARK.COM)

[info@topadventurepark.com](mailto:info@topadventurepark.com)



### **MODELLO "MIAMI"**

**Technical info**

**High 19mt**

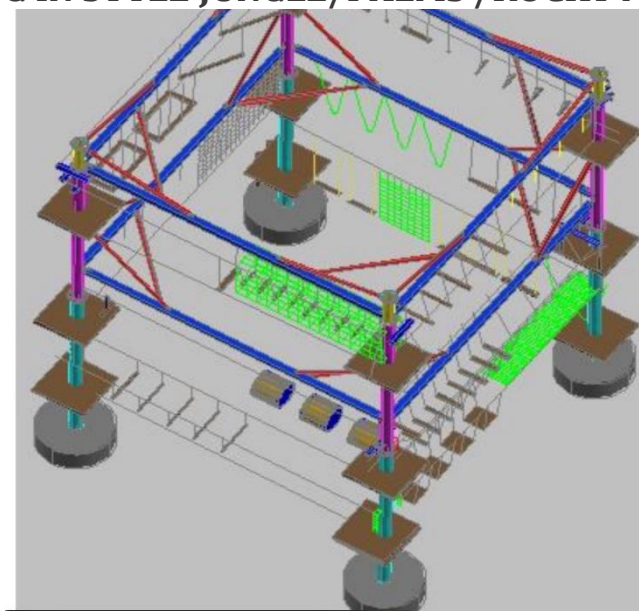
**Hourly Flow 75 persons**

**Number of passages 75**

**Kind of Structure, not Mobile  
foundations required**

**Cost all inclusive \* Euro 149.000,00**

**BRANDING IN STYLE JUNGLE/PALMS /ROCKY MOUNTAIN**



### **"MODELLO TORONTO"**

**Technical info**

**High 13mt**

**Hourly Flow 42 persons**

**Number of passages 64**

**Kind of Structure, not Mobile**



**top  
adventure  
park**

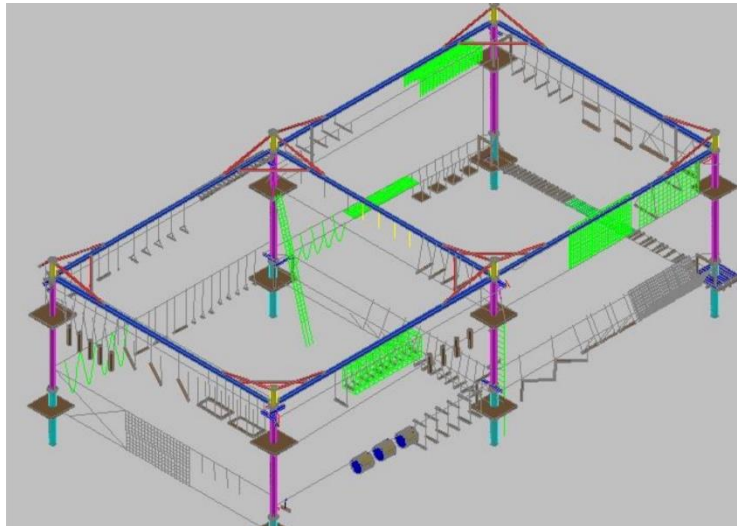
[WWW.TOPADVENTUREPARK.COM](http://WWW.TOPADVENTUREPARK.COM)

[info@topadventurepark.com](mailto:info@topadventurepark.com)

**foundations required**

**Cost all inclusive \* Euro99.000,00**

**BRANDING IN STYLE JUNGLE/PALMS /ROCKY MOUNTAIN**



**MODELLO BAHAMAS**

**Technical info**

**High 13mt**

**Hourly Flow 48 persons**

**Number of passages 50**

**Kind of Structure, Mobile**

**No foundations required**

**Cost all inclusive \* Euro 109.000,00**

**BRANDING IN STYLE JUNGLE/PALMS /ROCKY MOUNTAIN**

**\*ADDITIONAL COST**

**-SHIPPING**

**-IMPORT TAXES**

**-LOCAL TAXES (VAT)**

**-ADDITIONAL GADGETS**

**-SMART SAFETY LINE**

**-ADDITIONAL CLIMBING WALL**

**Contact us and order now your Adventure Park!**

[Info@topadventurepark.com](mailto:Info@topadventurepark.com)

**Top Adventure Park CEO  
Avv. Alfredo Manzaroli**



top  
adventure  
park

[WWW.TOPADVENTUREPARK.COM](http://WWW.TOPADVENTUREPARK.COM)  
[info@topadventurepark.com](mailto:info@topadventurepark.com)

**+39 366 5050530**